

Urban and Structural Pest Management Extension and Research on the UGA Griffin Campus

Dan Suiter

(dsuiter@uga.edu)

Department of Entomology
University of Georgia



Center for Urban Agriculture
College of Agricultural & Environmental Sciences
UNIVERSITY OF GEORGIA

GEORGIA STRUCTURAL PEST CONTROL TRAINING CENTER



The University of Georgia

THE UNIVERSITY OF GEORGIA
College of Agricultural and Environmental Sciences
Griffin Campus • Griffin, GA

Sponsors

Georgia Department of Agriculture

Gary W. Black • Commissioner

U.S. Environmental Protection Agency



GEORGIA STRUCTURAL PEST CONTROL
TRAINING CENTER
— THE UNIVERSITY OF GEORGIA —
College of Agricultural and Environmental Sciences
Gwinnett Campus • Gwinnett, GA
Sponsors
Georgia Department of Agriculture
U.S. Environmental Protection Agency

UGA Griffin Programs

(gabugs.uga.edu)

- 67 unique credit hours per year
- Strong GDAG Involvement
- Workshops:
 - ✓ Termite (11/6 h; 4X per year-2 Spring/2 Fall)
 - ✓ Bed Bug (5 h; once in Spring)
 - ✓ Commercial IPM (5 h; once in Spring)
 - ✓ 10-Week Certificate (24 h; 2X per year-Spring & Fall)
 - ✓ School IPM (5 h; once in Fall)
 - ✓ Home IPM (5 h; once in Fall)

UGA Griffin Programs

(gabugs.uga.edu)

- 67 unique credit hours per year
- Strong GDAG Involvement
- **Workshops:**
 - ✓ Termite (11/6 h; 4X per year-2 Spring/2 Fall)
 - ✓ Bed Bug (5 h; once in Spring)
 - ✓ Commercial IPM (5 h; once in Spring)
 - ✓ 10-Week Certificate (24 h; 2X per year-Spring & Fall)
 - ✓ School IPM (5 h; once in Fall)
 - ✓ Home IPM (5 h; once in Fall)







UGA Griffin Programs

(gabugs.uga.edu)

- 67 unique credit hours per year
- Strong GDAG Involvement
- **Workshops:**
 - ✓ Termite (11/6 h; 4X per year-2 Spring/2 Fall)
 - ✓ **Bed Bug (5 h; once in Spring)**
 - ✓ Commercial IPM (5 h; once in Spring)
 - ✓ 10-Week Certificate (24 h; 2X per year-Spring & Fall)
 - ✓ School IPM (5 h; once in Fall)
 - ✓ Home IPM (5 h; once in Fall)



UGA Griffin Programs

(gabugs.uga.edu)

- 67 unique credit hours per year
- Strong GDAG Involvement
- **Workshops:**
 - ✓ Termite (11/6 h; 4X per year-2 Spring/2 Fall)
 - ✓ Bed Bug (5 h; once in Spring)
 - ✓ **Commercial IPM (5 h; once in Spring)**
 - ✓ 10-Week Certificate (24 h; 2X per year-Spring & Fall)
 - ✓ School IPM (5 h; once in Fall)
 - ✓ Home IPM (5 h; once in Fall)





UGA Griffin Programs

(gabugs.uga.edu)

- 67 unique credit hours per year
- Strong GDAG Involvement
- **Workshops:**
 - ✓ Termite (11/6 h; 4X per year-2 Spring/2 Fall)
 - ✓ Bed Bug (5 h; once in Spring)
 - ✓ Commercial IPM (5 h; once in Spring)
 - ✓ 10-Week Certificate (24 h; 2X per year-Spring & Fall)
 - ✓ School IPM (5 h; once in Fall)
 - ✓ Home IPM (5 h; once in Fall)





UGA Pest Management Certificate

A Graduating Class



UGA Griffin Programs

(gabugs.uga.edu)

- 67 unique credit hours per year
- Strong GDAG Involvement
- **Workshops:**
 - ✓ Termite (11/6 h; 4X per year-2 Spring/2 Fall)
 - ✓ Bed Bug (5 h; once in Spring)
 - ✓ Commercial IPM (5 h; once in Spring)
 - ✓ 10-Week Certificate (24 h; 2X per year-Spring & Fall)
 - ✓ **School IPM (5 h; once in Fall)**
 - ✓ Home IPM (5 h; once in Fall)

UGA Griffin Programs

(gabugs.uga.edu)

- 67 unique credit hours per year
- Strong GDAG Involvement
- **Workshops:**
 - ✓ Termite (11/6 h; 4X per year-2 Spring/2 Fall)
 - ✓ Bed Bug (5 h; once in Spring)
 - ✓ Commercial IPM (5 h; once in Spring)
 - ✓ 10-Week Certificate (24 h; 2X per year-Spring & Fall)
 - ✓ School IPM (5 h; once in Fall)
 - ✓ Home IPM (5 h; once in Fall)



UGA Griffin Webinar Programs

(gabugs.uga.edu)

- Monthly, live webinars (+ Green Industry webinars)
 - ✓ Obtain Cat 41 CEUs from recorded webinars at your local county extension office (call 1-800-ASK-UGA1)
- Live webinars provide 24 CEUs per year for Structural Pest Control industry
- GDA Policy on Distance Ed has been the model for all states and provinces where credit is granted.
- Credit in GA, AL, SC, NC, TN, NJ, PA, MD, Nova Scotia, Labrador/Newfoundland, British Columbia.

Key Urban and Structural Pests in Georgia

Photo Credit: Clemson Univ.



Asian Needle Ant
Brachyponera chinensis

Brachyponera chinensis

Asian Needle ant

- SE Distribution: AL, FL, GA, NC, SC, TN
- Origin: China, Japan





The Asian
Needle ant
nests in and
under yard
debris.



Tawny Crazy Ant

(aka Raspberry Crazy Ant,
Hairy Crazy Ant,
Caribbean Crazy Ant)

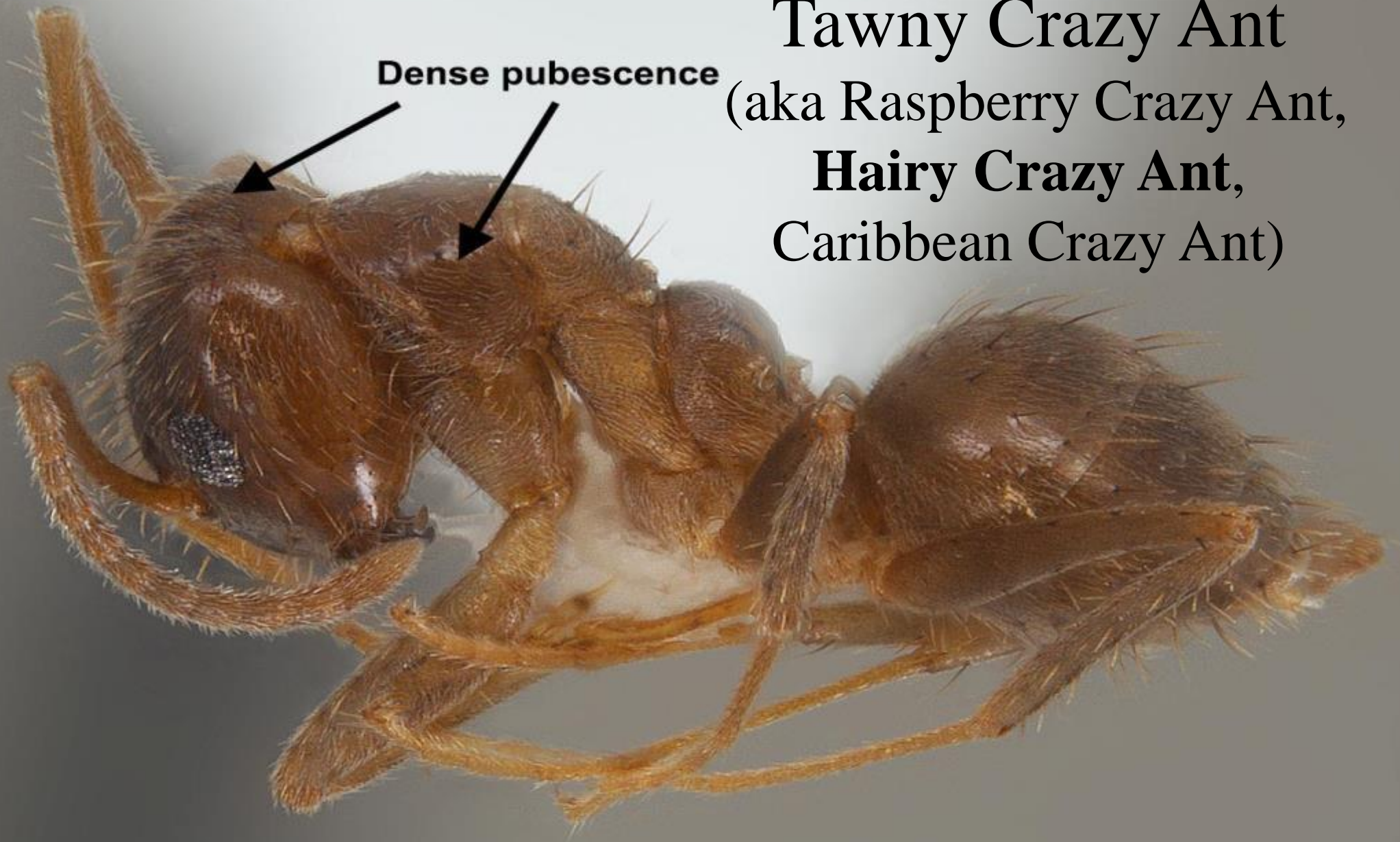


Photo by Joe A. MacGown
Mississippi Entomological Museum

1.0 mm

TCA in Georgia 2019

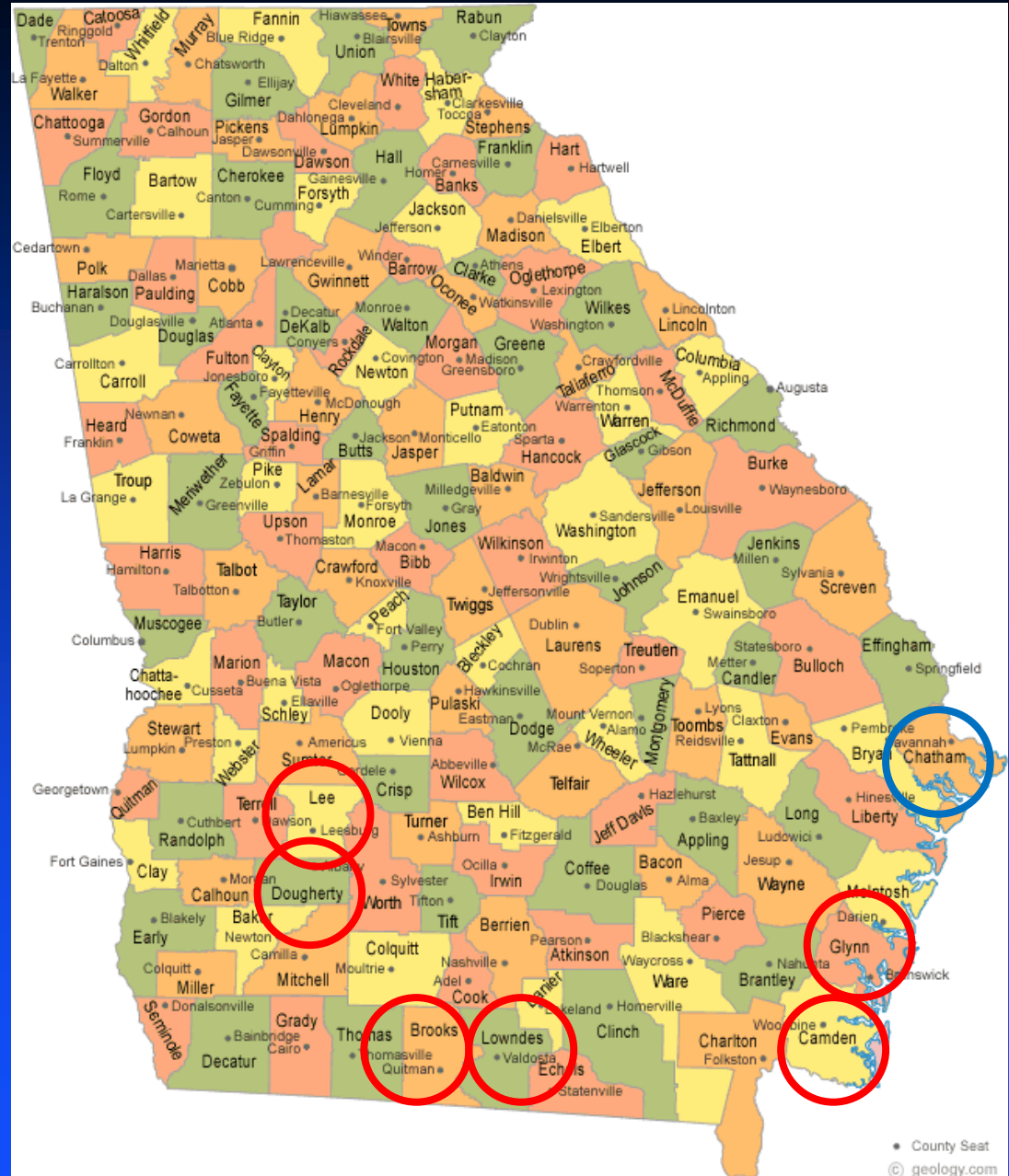
2013: Albany (Dougherty Cty)

2014: Camden & Glynn Cty

2015: Garden City (Chatham Cty),
Quitman (Brooks Cty),
Valdosta (Lowndes Cty).

2016-2018: None

2019: ?





Tawny Crazy Ant
Camden County, GA
August 2014

Tawny Crazy Ant
Camden County, GA
August 2014





Sanitation for TCA

Tawny Crazy Ants Nest Anywhere They Can Find Space

Albany, GA



Tawny Crazy Ants Nest Anywhere They Can Find Space

Albany, GA





A perspective view of a long, covered inspection ramp. On the left, a row of shipping containers is parked, with the first one being yellow and marked 'MSC'. The ramp is covered by a large, open-sided structure with a wooden truss roof. On the right, there is a large industrial building with a corrugated metal wall and a large roll-up door. The ramp leads towards a bright light at the far end.

Port of Savannah, GA
Ag Inspection Ramp
DHS Customs & Border Protection

A photograph showing a Customs and Border Protection officer in a white shirt and blue jeans, kneeling and inspecting a cargo container. The officer is wearing white gloves and using a handheld device to inspect the container's interior. The container is yellow and has a label that reads "FLTZ 240". The scene is set in a warehouse or port area with a concrete floor and a large metal door in the background.

Port of Savannah, GA
Ag Inspection Ramp
DHS Customs & Border Protection

Ants of the Port of Savannah

(Ben Gochnour M.S. Project)

Leaf litter extraction



Pitfall



Coarse woody debris



Tree



TCA Found

@ POS

June 2015

The Tawny Crazy ant
Eliminates Fire ants!

July 2015 to July 2016

1. Pecan Sandie baits
2. Half square meter quadrats

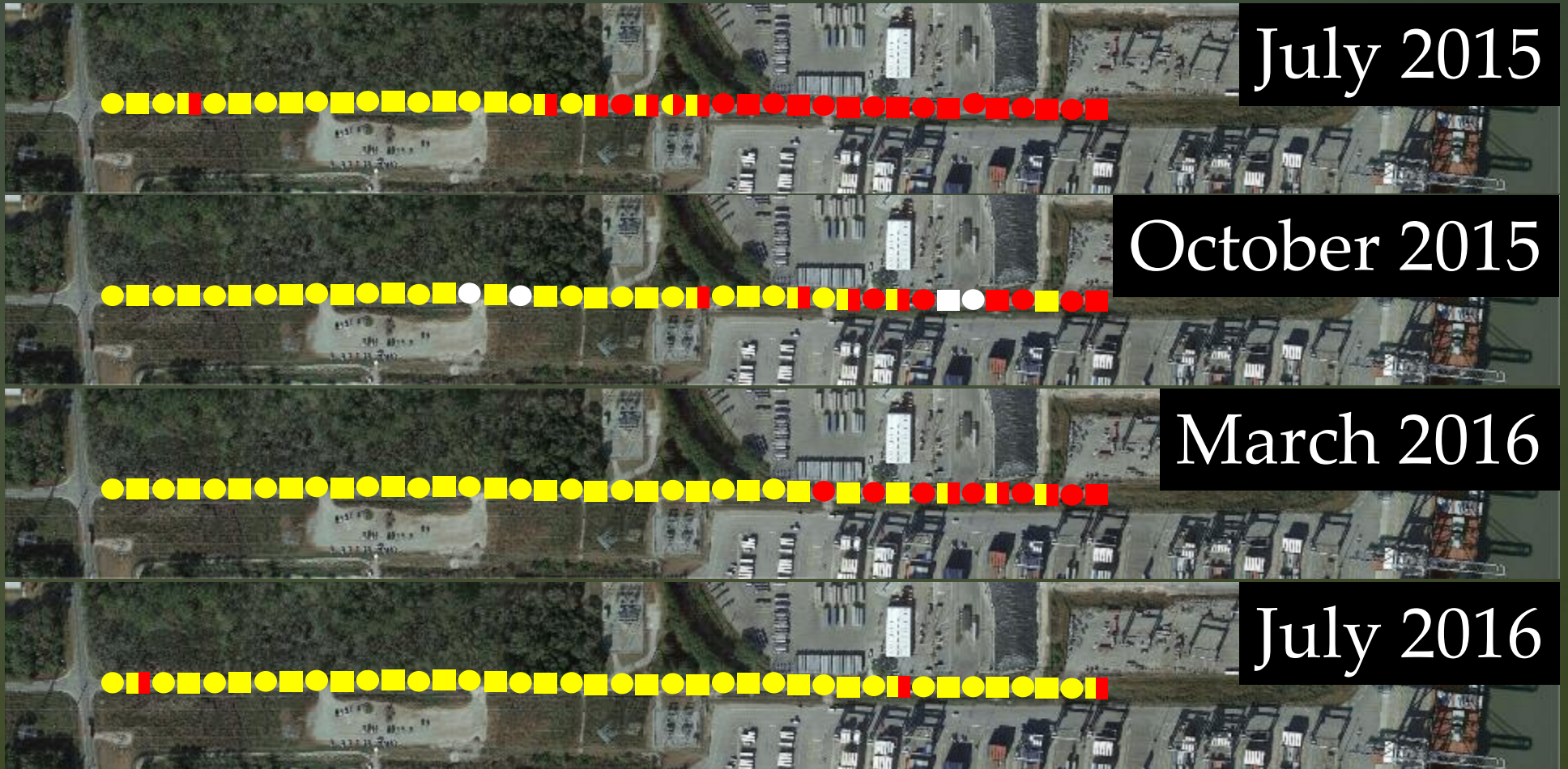
Quadrat and Bait Sampling



Site 2

Crazy Ant

Fire Ant



Square is Quadrat

Circle is Bait

Site 3

July 2015



Site 3

July 2016



Formosan Termites

Some Facts

- ✓ Native to China, and was introduced into several U.S. port cities over 50 years ago.
- ✓ In the U.S., the most widespread (and thus oldest) populations are in Louisiana (New Orleans), South Carolina (Charleston), Mississippi (Gulfport), Texas (Houston/Galveston), and Florida (Ft. Lauderdale) (port cities).
- ✓ In the U.S., distribution from infested to non-infested sites is mainly through the movement of infested railroad crossties.

The Suburbanization of Georgia

Crosstie Retaining Walls



The primary movement of FST into Georgia is through the use of used, infested crossties.

Recognizing Formosan Termites

Swarmers

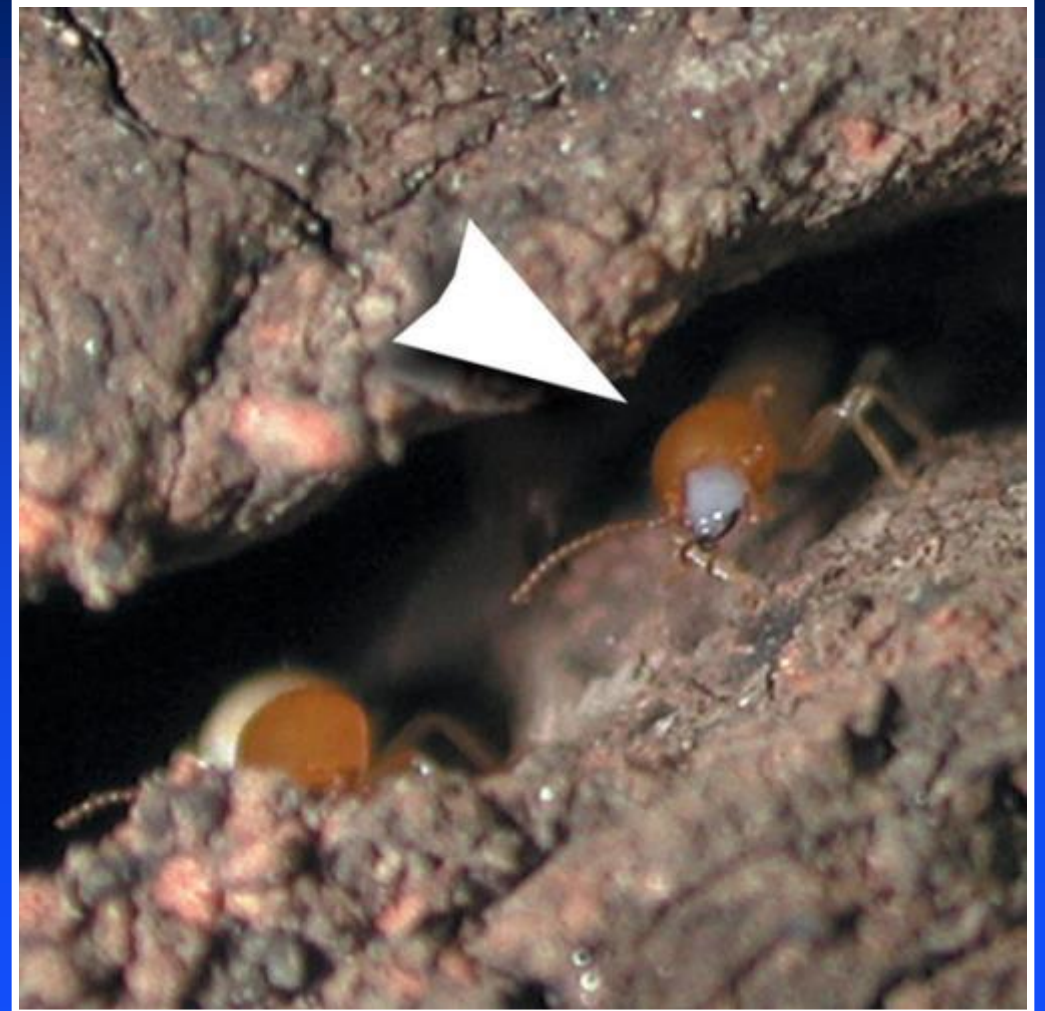
- Caramel color
- Larger than natives
- Swarm at night (9:00) in May/June
 - sticky cards at lights



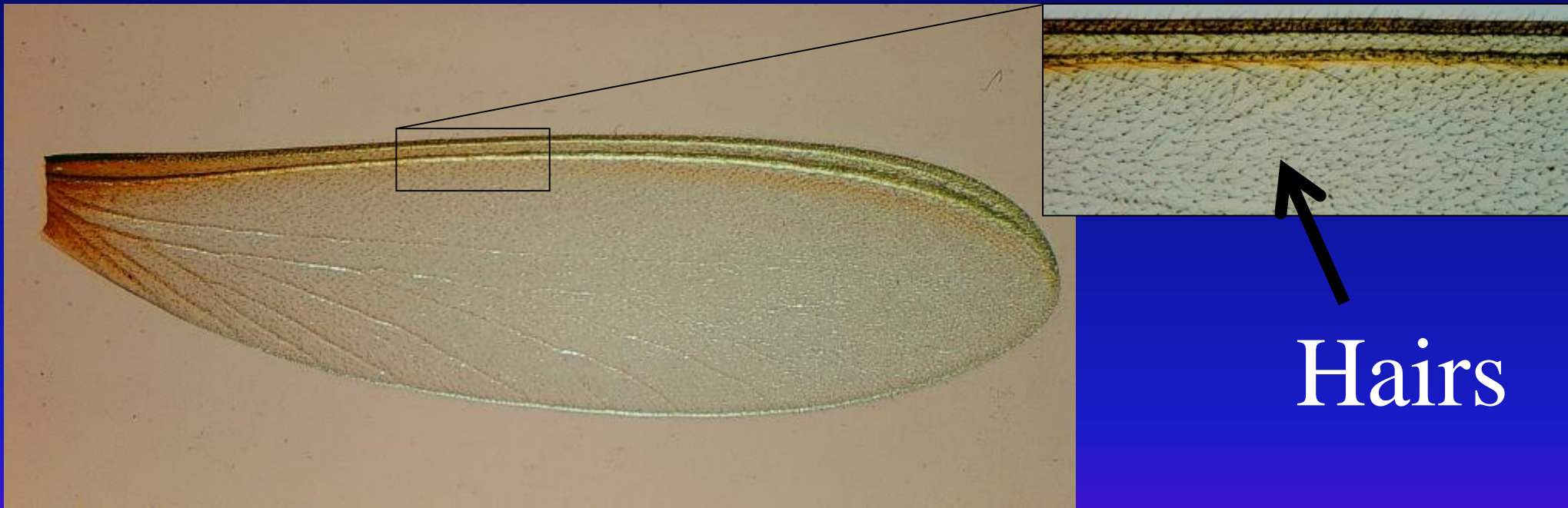
Recognizing Formosan Termites

Soldiers

- Many in colony
- Tear drop shape of head
- Secrete white substance



Formosan Sub Termites have tiny hairs on their wings; other subs do not



Formosan Sub vs Eastern Sub

C.f.

R.f.

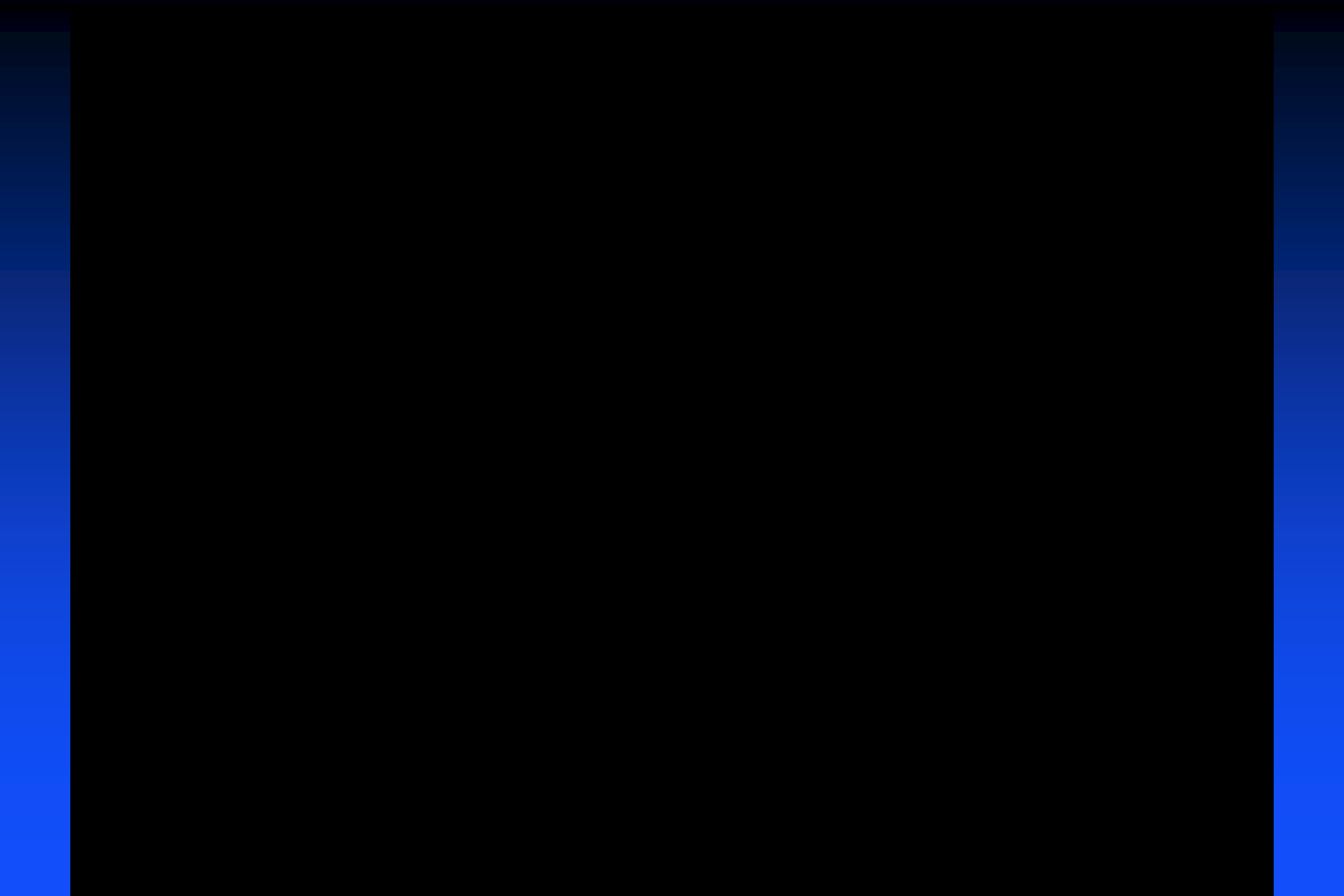
Tear Drop Shaped Head of Formosan Sub

Box Shaped Head of Eastern Sub

UF

Video 1

(FST wood damage)





2004 Columbus



Tubes along entire length
of triple joist.

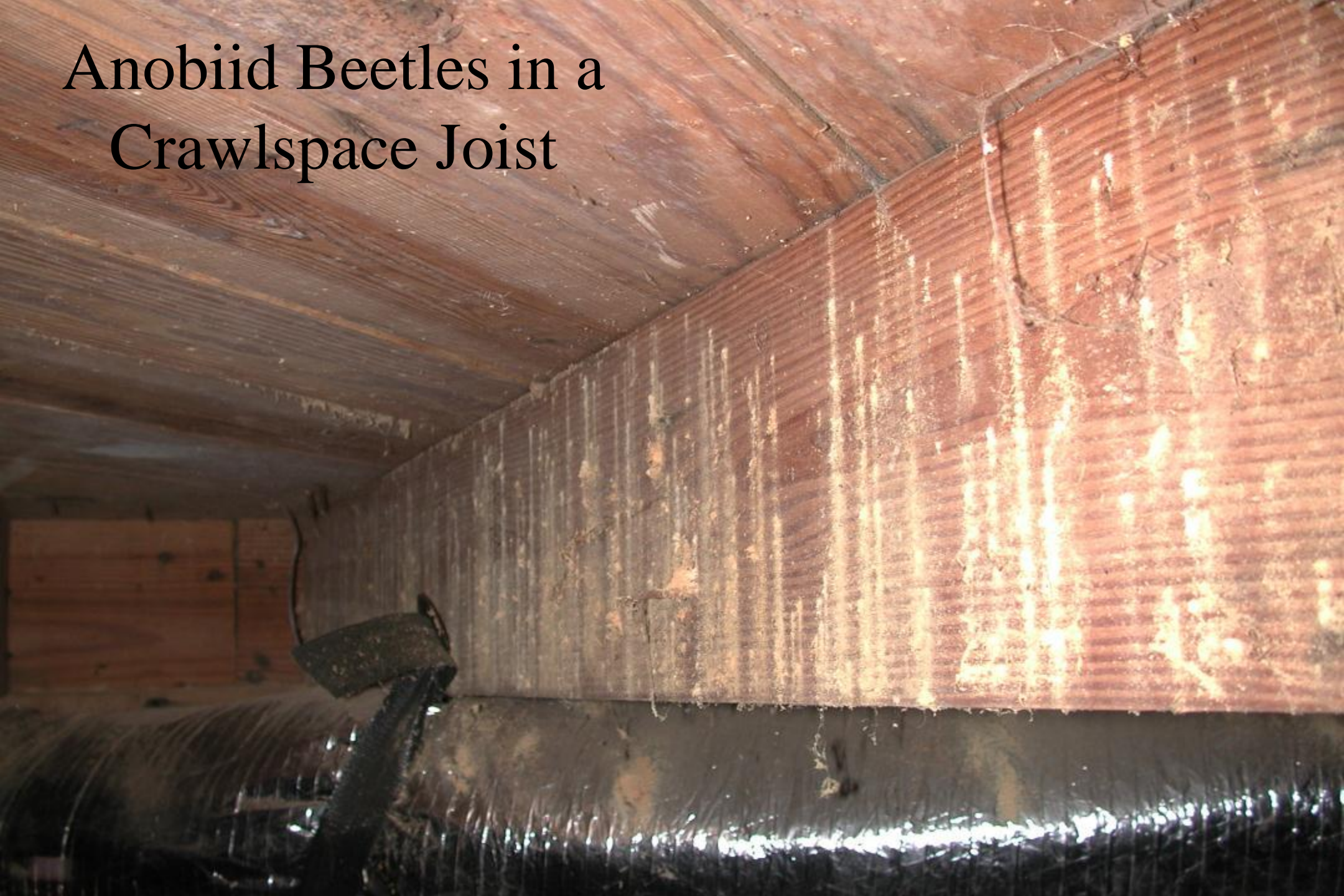
2004 Columbus





**Anobiine Powderpost
Beetles**

Anobiid Beetles in a Crawlspace Joist

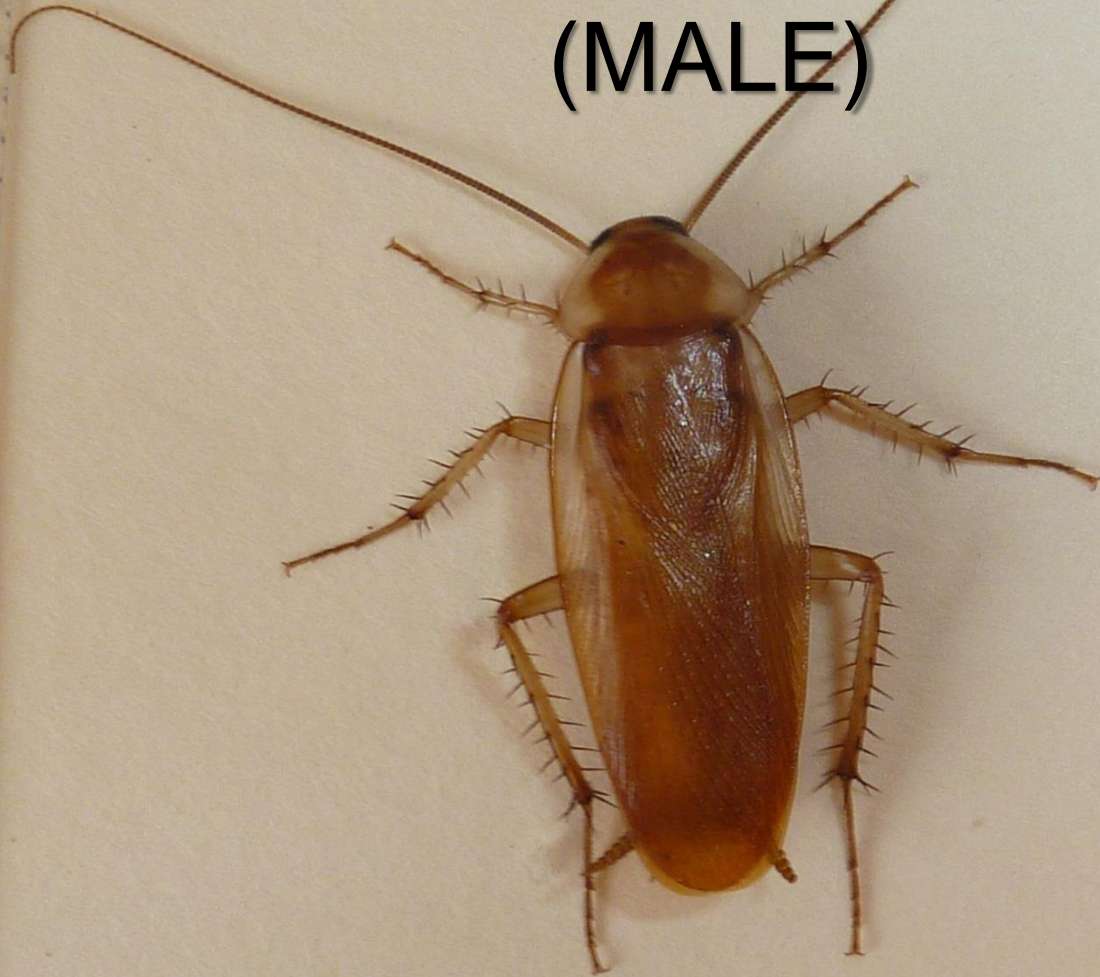


Turkestan Cockroach

Blatta lateralis



Turkestan Cockroach Found in Griffin, GA
September 2017
(MALE)



Turkestan Cockroach
Found in Griffin, GA
September 2017
(FEMALE)



Turkestan Cockroach Found in Griffin, GA
September 2017
(NYMPH)





Turkestan Cockroach
Found in Griffin, GA
September 2017
(Ootheca)



Beer-Baited Cockroach Trap

A close-up photograph of a Smokybrown Cockroach (Periplaneta fuliginosa) on a rough, textured surface. The cockroach is dark brown with a glossy sheen, showing its long antennae and spiny legs. The background is a highly textured, brownish-grey surface, possibly bark or stone.

Smokybrown Cockroach

Periplaneta fuliginosa



1st Instar Smokybrown Cockroaches Recently Hatched From Ootheca



Cockroaches – Granular and Gel Baits are Best

The University of Georgia's College of Agricultural and Environmental Sciences